

Land Trust Partnerships and Opportunities in Alberta

**Alberta Land Trust Alliance Workshop
March 27-28, 2008**



**Renny W. Grilz, P.Ag.
Director, Conservation**

Agenda

- Partnership Success Story
- Why Do Land Trusts Need to Partner?
- Where Can Land Trusts Partner?
- Other Partnership Considerations
- Next Steps

Partnership Success Story



ACA/AFGA/DUC/NCC Partnership

- All four land trusts have been partnering on projects across Alberta



ACA/AFGA/DUC/NCC Partnership

- In 1998, the land trusts partnered on the securement of the 1,120 acre Buffalo Lake Moraine Conservation Area
 - Lands have been jointly managed since
 - An additional 640 acres has been conserved adjacent to the BLMCA in the last 5 years by some of the partners



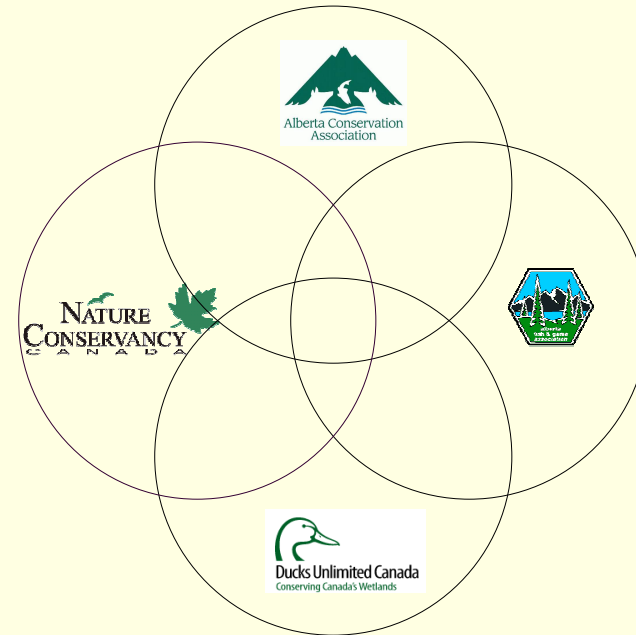
ACA/AFGA/DUC/NCC Partnership

- Since 1998, the partners have been meeting at the natural region level (Parklands, Grasslands, Peace River / Boreal)
- In 2005, the partners began discussions of creating a standard partnership agreement when jointly acquiring/stewarding a property
- In 2006, the following were created and endorsed by the partners:
 - Memorandum of Understanding
 - Standardized partnership acquisition/stewardship agreement
 - Provincial Review Team

ACA/AFGA/DUC/NCC Partnership

Goal of MOU

- To identify and prioritize common areas of interest and initiate collaborative conservation activities within Alberta.



ACA/AFGA/DUC/NCC Partnership

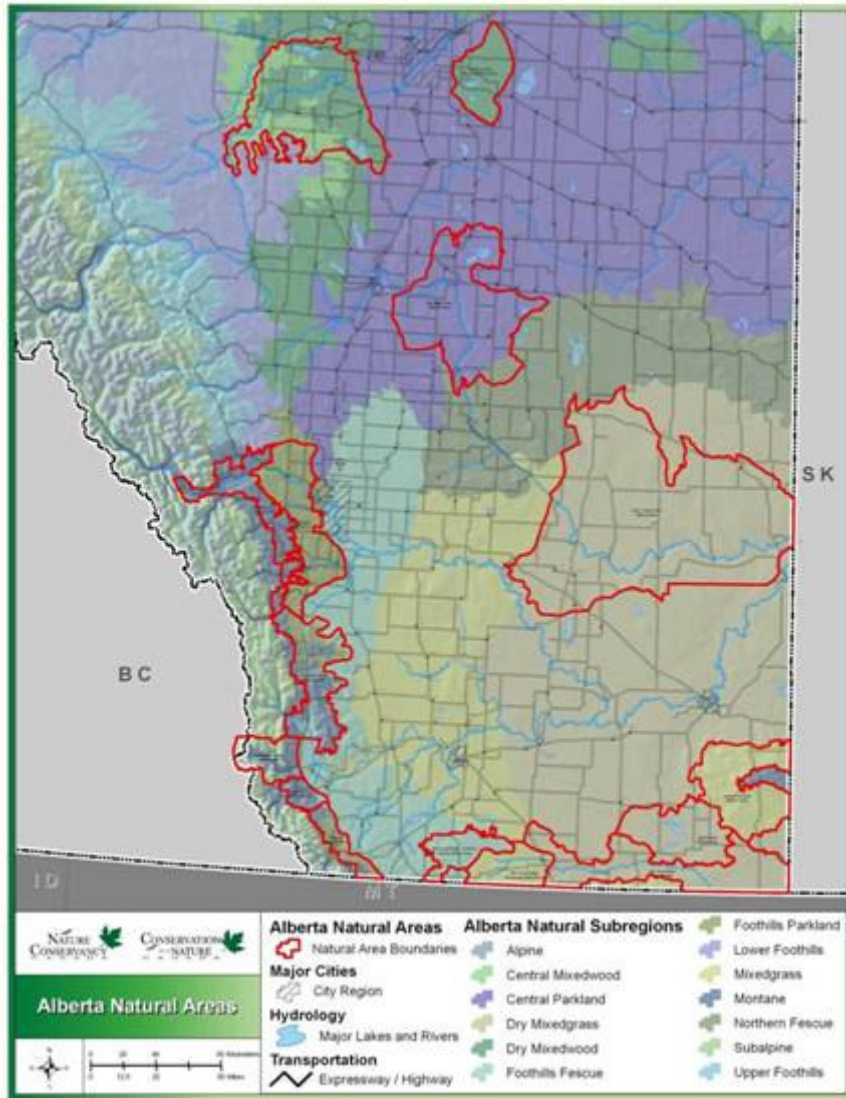
MOU Encourages the Partners To Work Cooperatively on:

- Habitat securement
- Stewardship/management of secured habitat
- Enhancement, improvement and restoration of secured habitat
- Conservation planning
- Standard templates and processes
- Consolidation of existing partnership agreements
- Share information on potential projects
- Participation with other partners and land trusts

Why Do Land Trusts Need to Partner?

- Conservation need/interest surpasses current capacity of land trusts
 - National and regional land trusts can't do it all
 - Local land trusts can fill in the gaps but may have limited capacity
- Share resources, skills, and expertise
- Local knowledge and relationships

Where Can Land Trusts Partner?



NCC's Priority Natural Areas:

- Berry Creek Plain
- Bow Montane
- Bow Parkland
- Castle Crown
- Cooking Lake Moraine
- Coyote Lake
- Crowsnest Pass
- Cypress Uplands
- Milk River Ridge – Foothills Fescue
- Milk River Ridge – Mixed Grass
- Milk River Basin
- Porcupine Hills
- Red Deer River
- Sage Creek
- Waterton

Other Partnership Considerations

- Landowners



Other Partnership Considerations

- Landowner Groups
- Watershed Groups
- Naturalist Groups



Other Partnership Considerations

- Volunteers



Other Partnership Considerations

- Donors
 - Individuals
 - Foundations
 - Corporations



NATURE CONSERVANCY   **TransCanada**
In business to deliver
Partners in Stewarding Alberta's Natural Heritage



Other Partnership Considerations

- Government
 - Municipalities
 - Provincial Agencies
 - Federal Agencies



Next Steps

- Foster collaboration between land trusts
 - Open communication lines between land trusts
 - Identify where land trusts are working and their program criteria
 - Share success stories and “glorious wrecks”

